

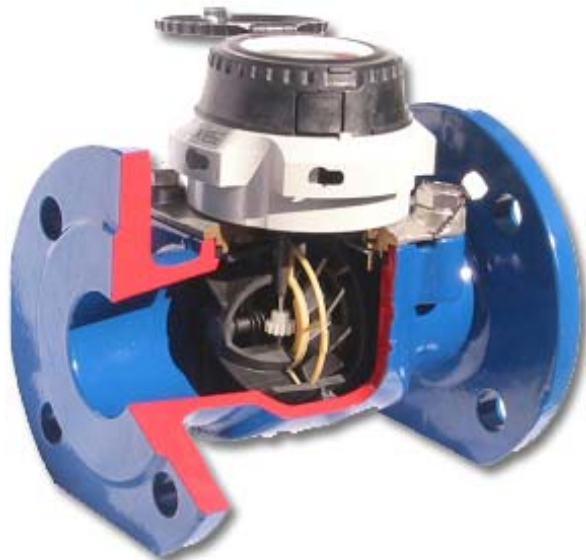


Flanged Turbine Meters

ANSI Flanges... 150lb/300lb Class 1-1/2" to 12"
 DIN Flanged... PN-16/25/40 40mm to 300mm
 Mechanical Totalizing Water Meters

2011 Price List & Product Guide

Accurate, economical & dependable flow measurement solutions for a variety of industrial applications...



WP/D Cold



WP/D Hot



WP-QF/HP Cold



WP-QF/HP Hot

Industries

- Power Generation
- Concrete & Asphalt
- Process Water
- Waste Water
- Pharmaceutical
- Pulp & Paper
- Chemical
- Public Utilities
- Agriculture

Applications

- Flow Measurement
- Water Batching
- Blending
- Flow Control
- Bulk Transfer
- Utility Auditing

Accessories

- Reed Style Pulsers
- Opto Style Pulsers
- FM1-D/K Frequency to Analog Converter

WP/Dynamic Series

Bulk liquid meter for measurement of high, relatively constant flows of both cold and hot water; ANSI 150lb/DIN PN-16 RF Flanged Connections

WP/Dynamic BMF Series

Originally designed for measurement of brine solutions, the BMF series is ideal for measuring caustics sodas to 20%, Saline water to 10%, Glycol-water solutions to 30% & other Caustic solutions with pH values up to 9; ANSI 150lb/DIN PN-16 RF Flanged Connections

WP-QF High Pressure Series

ANSI 300lb/DIN PN-25/40 RF Flanged Connections for Hi-Pressure Applications

- Measurement accuracy of +/- 2% on flows ranging from 2.0 GPM to 8,800 GPM
- Available in sizes ranging from 1.5" to 12" (40mm to 300mm) for both cold and hot water applications
- Meinecke Turbine Water Meters can be installed vertically, horizontally or inclined with straight, unobstructed pipe runs of as little as three (3) Pipe Diameters upstream and zero (0) downstream

Information contained within this document is subject to change without notice. All technical designs, advice and/or recommendations are rendered free of charge. As a result, Cross Instrumentation disclaims any responsibility or liability to the buyer or user of this information for any results obtained or damages incurred by reason of the use or application of the design or other information contained herein. This information is intended for use by skilled persons at their own risk.



Flanged Turbine Meters

ANSI Flanges... 150lb/300lb Class... 2" to 12"
Mechanical Totalizing Water Meters

Price List

✓ = Stock Item / IMU = Internal Measure Unit

WP/Dynamic Series

Cold Water Meters - To 122°F / 50°C

ANSI 150 lb / PN-16 DIN

Hot Water Meters - To 266°F

Size	Meter M/N	Price	IMU P/N	Price	Size	Meter M/N	Price	IMU P/N	Price
1-1/2"	✓ 82 85 93	1083.00	✓ 82 85 77	812.00	1-1/2"	✓ 82 85 94	1227.00	82 85 81	920.00
2"	✓ 82 85 95	1115.00	✓ 82 86 39	836.00	2"	✓ 82 85 96	1264.00	82 86 40	948.00
3"	✓ 82 86 01	1154.00	✓ 82 85 78	866.00	3"	✓ 82 86 02	1536.00	82 85 82	1152.00
4"	✓ 82 86 03	1670.00	✓ 82 86 43	1,253.00	4"	✓ 82 86 04	1860.00	82 86 44	1395.00
6"	✓ 82 86 07	2426.00	82 85 79	1,820.00	6"	82 86 08	2924.00	82 85 83	2193.00
8"	✓ 82 87 17	3088.00	82 87 21	2,316.00	8"	82 87 18	3440.00	82 87 22	2580.00
10"	✓ 82 87 19	3495.00	82 87 23	2,624.00	10"	82 87 20	4984.00	82 87 24	3738.00
12"	✓ 82 87 43	4469.00	82 87 51	3,352.00	12"	82 87 44	5734.00	82 87 52	4300.00

Desalinated/Demineralized Water, Brine Solutions

WP/Dynamic BMF Series

Light Caustics, Glycol-Water to 10% & more...

Cold Water Meters - To 122°F / 50°C

ANSI 150 lb / PN-16 DIN

Hot Water Meters - To 266°F / 130°C

Size	Meter M/N	Price	IMU P/N	Price	Size	Meter M/N	Price	IMU P/N	Price
2"	82 89 80	1,636.00	82 89 94	1,227.00	2"	82 89 87	2,324.00	82 90 01	1,743.00
3"	82 89 82	1,710.00	82 89 96	1,283.00	3"	82 89 89	2,608.00	82 90 03	1,956.00
4"	82 89 83	1,788.00	82 89 97	1,341.00	4"	82 89 90	2,785.00	82 90 04	2,089.00
6"	82 89 85	3,168.00	82 89 99	2,376.00	6"	82 89 92	4,116.00	82 90 06	3,087.00
8"	82 89 86	3,782.00	82 90 00	2,837.00	8"	82 89 93	4,730.00	82 90 07	3,548.00

Cold Water Meters - To 122°F / 50°C

WPD Communication Accessories

Hot Water Meters - To 266°F / 130°C

Type	Model	Pulse/Rev	P/N	Price	Type	Model	Pulse/Rev	P/N	Price
REED	RD 01	1 or 10	✓ 11 78 01	237.00	REED	RD 02	4 or 10	✓ 11 78 02	257.00
OPTO	OD 01	1000	✓ 11 78 06	309.00	OPTO	OD 02	1000	✓ 11 78 07	339.00
OPTO	OD 03	100	✓ 11 78 09	339.00	OPTO	OD 04	100	✓ 11 78 10	385.00

FM-1D/K Frequency to Analog Converter - Remote Display of Rate & Total **M/N:** 18 20 23 ✓ **Price:** \$935.00

WP-QF High Pressure Series

Cold Water Meters - To 122°F / 50°C

ANSI 300lb - PN-25/40 DIN

Hot Water Meters - To 266°F / 130°C

Size	Meter M/N	Price	IMU P/N	Price	Size	Meter M/N	Price	IMU P/N	Price
2"	82 74 44	1,555.00	82 74 14	1,166.00	2"	82 63 64	2,215.00	82 83 62	1,661.00
3"	82 74 50	1,579.00	82 74 20	1,184.00	3"	82 74 51	2,238.00	82 74 21	1,679.00
4"	82 74 56	1,844.00	82 74 26	1,383.00	4"	82 74 57	2,479.00	82 74 27	1,859.00
6"	82 74 62	3,883.00	82 74 32	2,912.00	6"	82 74 63	4,607.00	82 74 33	3,455.00
8"	82 74 68	4,388.00	82 74 38	3,291.00	8"	82 74 69	5,091.00	82 74 39	3,818.00
10"	82 81 82	8,645.00	82 81 70	6,484.00	10"	82 81 83	9,875.00	82 81 71	7,406.00
12"	82 81 88	9,875.00	82 81 76	7,406.00	12"	82 81 89	11,100.00	82 81 77	8,325.00

Cold Water Meters - To 122°F / 50°C

Communication Accessories

Hot Water Meters - To 266°F / 130°C

Type	Model	Pulse/Rev	P/N	Price	Type	Model	Pulse/Rev	P/N	Price
REED	RD 01	1 or 10	11 36 94	237.00	REED	RD 02	4 or 10	11 36 96	257.00
OPTO	OD 01	1,000	11 37 74	309.00	OPTO	OD 02	1,000	11 40 43	339.00
OPTO	OD 03	100	11 49 30	339.00	OPTO	OD 04	100	11 49 31	385.00

FM-1D/K Frequency to Analog Converter - Remote Display of Rate & Total **M/N:** 18 20 23 ✓ **Price:** \$935.00



Flanged Turbine Meters

ANSI Flanges... 150lb/300lb Class... 2" to 12"
Mechanical Totalizing Water Meters

Performance Data

WP/Dynamic Cold Water Turbine Meters	Std Only		BMF Series and Standard Series Meters										Standard Series Only			
	1.5"/40mm		2"/50mm		3"/80mm		4"/100mm		6"/150mm		8"/200mm		10"/250mm		12"/300mm	
	GPM	M ³ /H	GPM	M ³ /H	GPM	M ³ /H	GPM	M ³ /H	GPM	M ³ /H	GPM	M ³ /H	GPM	M ³ /H	GPM	M ³ /H
Q^{max}	264	60	396	90	881	200	1321	300	2642	600	5283	1200	7044	1600	8805	2000
Qⁿ	176	40	220	50	528	120	1013	230	1981	450	3522	800	5503	1250	6164	1400
Q^t	3.5	0.8	3.1	0.7	3.5	0.8	7.9	1.8	17.6	4	26.4	6	48.4	11	66	15
Q^{min}	1.3	0.3	1.3	0.3	2.2	0.5	3.5	0.8	7.9	1.8	17.6	4	26.4	6	52.8	12
Starting Flow	0.7	0.2	0.9	0.2	1.3	0.3	1.3	0.3	4.4	1	6.6	1.5	13.2	3	35.2	8

Q^{max} = Max Peak Flow (Once in a lifetime, 24 hours @ Q^{max} or 5 minutes @ 1.2 x Q^{max}), Qⁿ = Max Continuous Flow, Q^t = Transitional Flow, Q^{min} = Minimum Flow

WP/Dynamic Hot Water Turbine Meters	Std. Only		BMF Series and Standard Series Meters										Standard Series Only			
	1.5"/40mm		2"/50mm		3"/80mm		4"/100mm		6"/150mm		8"/200mm		10"/250mm		12"/300mm	
	GPM	M ³ /H	GPM	M ³ /H	GPM	M ³ /H	GPM	M ³ /H	GPM	M ³ /H	GPM	M ³ /H	GPM	M ³ /H	GPM	M ³ /H
Q^{max}	88.1	20	132	30	396	90	616.4	140	1321	300	2201	500	4403	1000	5283	1200
Qⁿ	44	10	66	15	198	45	308.2	70	660.4	150	1101	250	2201	500	2642	600
Q^t	7.93	1.8	7.9	1.8	14.1	3.2	21.1	4.8	52.8	12	88.1	20	198.1	45	220.1	50
Q^{min}	2.64	0.6	2.6	0.6	6.2	1.4	8.8	2	19.8	4.5	35.2	8	88.1	20	110.1	25
Starting Flow	1.1	0.25	1.3	0.3	1.8	0.4	2.6	0.6	7.5	1.7	8.8	2	44	10	66	15

Q^{max} = Max Peak Flow (Once in a lifetime, 24 hours @ Q^{max} or 5 minutes @ 1.2 x Q^{max}), Qⁿ = Max Continuous Flow, Q^t = Transitional Flow, Q^{min} = Minimum Flow

WP-QF HP Cold Water Turbine Meters	High Pressure (ANSI 300 lb / PN-25/40) Meters Only															
	1.5"/40mm		2"/50mm		3"/80mm		4"/100mm		6"/150mm		8"/200mm		10"/250mm		12"/300mm	
	GPM	M ³ /H	GPM	M ³ /H	GPM	M ³ /H	GPM	M ³ /H	GPM	M ³ /H	GPM	M ³ /H	GPM	M ³ /H	GPM	M ³ /H
Q^{max}	N/A		352	80	881	200	1101	250	2642	600	3522	800	5283	1200	8805	2000
Qⁿ			176	40	528	120	792.5	180	1761	400	2422	550	3302	750	4403	1000
Q^t			4.4	1	4.4	1	11	2.5	17.6	4	26.4	6	52.8	12	66	15
Q^{min}			2.2	0.5	2.6	0.6	5.3	1.2	12.1	2.8	17.6	4	26.4	6	52.8	12
Starting Flow			0.9	0.2	1.1	0.3	1.3	0.3	7.5	1.7	7.9	1.8	13.2	3	39.6	9

Q^{max} = Max Peak Flow (Once in a lifetime, 24 hours @ Q^{max} or 5 minutes @ 1.2 x Q^{max}), Qⁿ = Max Continuous Flow, Q^t = Transitional Flow, Q^{min} = Minimum Flow

WP-QF HP Hot Water Turbine Meters	High Pressure (ANSI 300 lb / PN-25/40) Meters Only															
	1.5"/40mm		2"/50mm		3"/80mm		4"/100mm		6"/150mm		8"/200mm		10"/250mm		12"/300mm	
	GPM	M ³ /H	GPM	M ³ /H	GPM	M ³ /H	GPM	M ³ /H	GPM	M ³ /H	GPM	M ³ /H	GPM	M ³ /H	GPM	M ³ /H
Q^{max}	N/A		132	30	396	90	616.4	140	1321	300	2201	500	4403	1000	5283	1200
Qⁿ			66	15	198	45	308.2	70	660.4	150	1101	250	2201	500	2642	600
Q^t			7.9	1.8	14.1	3.2	21.1	4.8	52.8	12	88.1	20	198.1	45	220.1	50
Q^{min}			4.4	1	6.2	1.4	8.8	2	19.8	4.5	35.2	8	110.1	25	132.1	30
Starting Flow			1.1	0.3	1.8	0.4	2.6	0.6	7.5	1.7	8.8	2	44	10	66	15

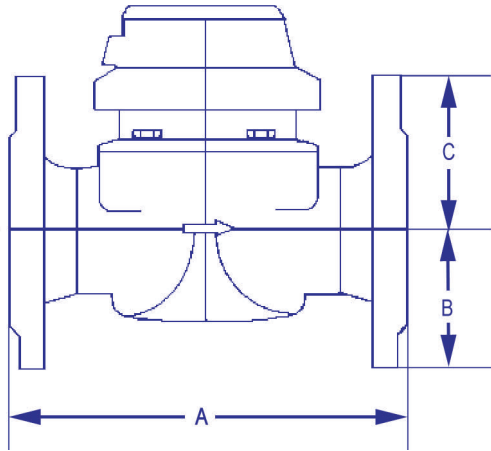


Flanged Turbine Meters

ANSI Flanges... 150lb/300lb Class... 2" to 12"
Mechanical Totalizing Water Meters

Dimensional / Weight Data

Dimensions



Installation Considerations

- The installation site should be chosen so that an unrestricted straight pipe of at least 3 Pipe Diameters is ensured.
- The Pipe Diameter should not be reduced directly in front of or behind the meter.
- All regulation of the flow should be done behind the meter.
- The meter must be installed in the pipe free of stress.
- The location of the meter should be such that it is not possible for air pockets to develop in the meter i.e. the meter should not be at high points in the pipeline or operated under half full pipe conditions.

Meter Size	WP/Dynamic - Standard & BFM Series - Cold & Hot Water Meters / ANSI 150lb-DIN PN-16															
	1.5"/40mm		2"/50mm		3"/80mm		4"/100nn		6"/150mm		8"/200mm		10"/250mm		12"/300mm	
	Inch	mm	Inch	mm	Inch	mm	Inch	mm	Inch	mm	Inch	mm	Inch	mm	Inch	mm
A	8 11/16	220	7 7/8	200	8 7/8	225	9 13/16	250	11 13/16	300	13 3/4	350	17 11/16	450	19 11/16	500
B	4 3/4	120	2 7/8	73	3 3/4	95	4 1/8	105	5 5/16	135	6 3/8	162	7 5/8	194	8 7/8	226
C	2 11/16	69	4 3/4	120	5 7/8	150	5 7/8	150	6 15/16	177	8 1/8	206	9 1/8	231	10 1/16	256
Weight	lbs	kg	lbs	kg	lbs	kg	lbs	kg	lbs	kg	lbs	kg	lbs	kg	lbs	kg
IMU	16.3	7.4	3.09	1.4	6.61	3	6.61	3	12.13	5.5	16.53	7.5	16.53	7.5	16.53	7.5
Body	3.1	1.4	13.89	6.3	23.37	10.6	33.07	15	66.14	30	94.8	43	140.65	63.8	202.38	91.8
Total	13.2	6.3	16.98	7.7	29.98	13.6	39.68	18	78.26	35.5	111.33	50.5	159.39	72.3	218.92	99.3

Meter Size	WP-QF - High Pressure - Cold & Hot Water Meters / ANSI 300lb - DIN PN-25, 40															
	1.5"/40mm		2"/50mm		3"/80mm		4"/100nn		6"/150mm		8"/200mm		10"/250mm		12"/300mm	
	Inch	mm	Inch	mm	Inch	mm	Inch	mm	Inch	mm	Inch	mm	Inch	mm	Inch	mm
A	N/A		7 7/8	200	8 7/8	225	9 13/16	250	11 13/16	300	13 3/4	350	17 11/16	450	19 11/16	500
B	N/A		2 7/8	73	3 3/4	95	4 1/8	105	5 5/16	135	6 3/8	162	7 5/8	194	8 7/8	226
C	N/A		4 3/4	120	5 7/8	150	5 7/8	150	6 15/16	177	8 1/8	206	9 1/8	231	10 1/16	256
Weight	N/A		lbs	kg	lbs	kg	lbs	kg	lbs	kg	lbs	kg	lbs	kg	lbs	kg
IMU	N/A		6.6	3	6.6	3	6.6	3	19.8	9	19.8	9	48.5	22	48.5	22
Body	N/A		26.5	12	33.1	15	46.3	21	75.0	34	105.8	48	211.6	96	291.0	132
Total	N/A		33.1	15	39.7	18	52.9	24	94.8	43	125.7	57	260.1	118	339.5	154
Pressure	PSI/Bar		300	40	300	40	300	40	300	40	300	40	300	25	300	25

Information contained within this document is subject to change without notice. All technical designs, advice and recommendations are rendered free of charge. As a result, Cross Instrumentation disclaims any responsibility or liability to the buyer or user of this information for any results obtained or damages incurred by reason of the use or application of the design or other information contained herein. This information is intended for use by skilled persons at their own risk.

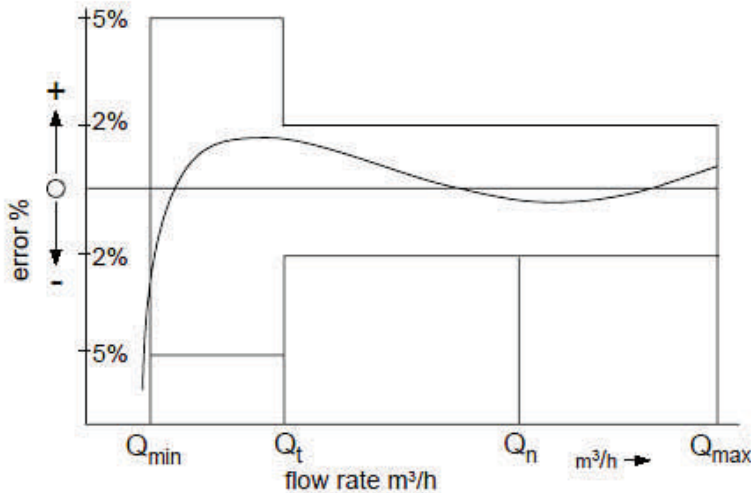


Flanged Turbine Meters

ANSI Flanges... 150lb/300lb Class... 2" to 12"
Mechanical Totalizing Water Meters

Accuracy / Pressure Drop Curves

Typical Accuracy Curve



Download Data Sheets

Downloads require an active Internet Connection

WP/Dynamic Standard Water Meters [Cold](#) / [Hot](#)

WP/Dynamic BMF Series Meters [Cold](#) / [Hot](#)

WP-QF High Pressure Meters [Cold](#) / [Hot](#)

[Opto Pulsers](#) / [Reed Pulsers](#) / [FM-1D/K](#)

Q_{max} = Maximum Peak Flow

Q_n = Maximum Continuous Flow

Q_t = Transitional Flow + 2%

Q_{min} = Minimum Flow + 5%

Typical Pressure Drop Curve

